

KP STUDIO - Prong Setting Supplies

Please plan to have your supplies prior to the start of class. Supplies can be purchased at SJ Jewelry Supply which is located next to the studio in Suite 1. Give them a call at least 24 hours in advance and they will have the supplies put together and waiting for you. Their phone number is: 602-956-0189

Updated 4/2023

Projects

	Week 1 - Setting Basics - Cast Ring	Week 2 - Semi Fabricated Ring	Week 3 - Fabricated Ring - Pt. 1	Week 4 - Fabricated Ring - Pt. 2
4- Round faceted CZs 6mm any color (but MUST be CZ, NO SUBSTITUTIONS)	**	**		
4in - choice of silver low dome #5 or silver 14g double half round wire		**		
1mm drill bit		**		
Magnesia Block		**	**	**
Wire-looping pliers			**	**
1- Round faceted CZ, 8mm (any color, but MUST be CZ) No substitutions			**	**
2ft - 16g silver round wire			**	**
4in - 4x1 flat silver wire			**	**
6in - 3x1 flat silver wire			**	**
1 - 2mm bud bur			**	**

You will need the following for **ALL** classes.

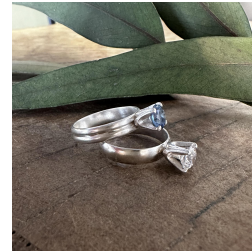
- Wax Stick
- Optivisor
- Divider
- Flatnose pliers
- Blue Barrel sanding drum
- 2 - greyish/blackish knife edge pacific abrasive wheel
- 1 - mandrel for above wheels
- Yellow through green bristle disks
- Flux
- 1 each - easy, medium, hard solder
- 220 grit sandpaper
- All in one polishing wheel and mandrel
- 2/0 or 3/0 saw blades
- Fine tip sharpie
- 1- Tool handle with collets and chuck to fit standard 3/32 mandrel

Studio Provided Materials:

- Prong heads
- Brass for practice and tool-making
- Cylinder burs
- Hart burs
- Cup burs



WEEK 1



Week 2



Week 3 & 4